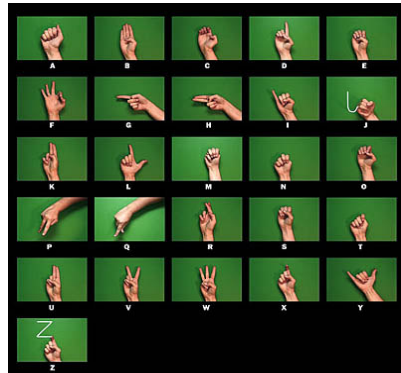




ASL – American Sign Language

International Gateway Language Academy a variety of educational opportunities to learn American Sign Language and Deaf Culture in order to facilitate and promote communication between the Deaf and hearing communities in our West Coast society. ASL courses are offered to those wishing to learn sign language for family, community service, for business or for fun. Students can register for Level 1 and Level 2. Level 1a starts with the basic skills of sign and upon completion and graduation of Level 1a, students can move on to Levels b, c, and d. On completion of Level 1d, students have the option of continuing in Level 2. Each course is 30 hours and runs for 6 weeks. Classes run every Tuesday and Thursday for 2.5 hours, beginning at 7 and end at 9:30 pm, or every Saturday from 9 am to 3 pm. Class sizes are a minimum of 6 students and a maximum of 12.

Course Description/Information:



International Gateway Language Academy offers high-quality sign language instruction using the Vista Signing Naturally curriculum. Specific emphasis is placed on communication in the daily interaction of people using ASL. Learning sign language is comparable to learning any other foreign language. The length of time and breadth of knowledge required for fluency depends on the motivation of the student and the amount of exposure to the Deaf Community. Typically the best indicator of how long it will take to become fluent is the amount of time spent using the language in its natural environment. On average, it takes from 5 to 7 years of active learning to be ready to work as a sign language interpreter. In 2009 we will be introducing ASL Interpretation course.

Grammar, vocabulary, finger-spelling, and cultural behaviors are incorporated into all of our courses. It is best when learning any language and to learn it well, is through immersion. As a result your voice is filed at the door and can be reclaimed when leaving the classroom! **All** communication in class will be visual, and talking is not permitted in the classroom. Homework will be assigned in each class. There is a minimum enrollment of 6 students per class, and a maximum of 12. Enrollment will be on a first-come, first serve basis, so sign-up early for each term. Unfortunately we are unable to issue refunds with the exception of a documented medical emergency or a class cancellation.



Boyd McWilliam ASL Instructor

New Students: Please feel free to contact our office if you need assistance locating a book. It is strongly recommended that all students own an American Sign Language dictionary. It is an honor and a privilege to offer ASL to the BC and the Fraser Valley communities and we thank you for your interest and participation.

Limitations: Enrollment in class is on a first-come, first-serve basis. The minimum enrollment in sign language classes is 6, with a maximum of 12 students. Refunds will not be honored except for documented medical emergency or class cancellation.

Locations: Our main office is located in Surrey, BC with branch locations in Richmond, Vancouver, Burnaby, New Westminister, Abbotsford and Chilliwack. The running of these programs in these satellite cities will depend on the number of student enrollment.

Weekly schedule and start dates.

Time	Monday	Tuesday	Wednesday	Thursday	Friday	Saturday
9:00 am - 3:00 pm						ASL – Class 3 Beginners Prep.1/2
7:00 pm - 9:30 pm	ASL – Class 1 Beginners Prep. 1	ASL – Class 2 Beginners Prep. 1	ASL – Class 1 Beginners Prep. 1	ASL – Class 2 Beginners Prep. 1		

- Start Dates:**
- Tuesday/Thursday classes - September 2nd 2008, October 14th, 2008
 - Monday/Wednesday classes – September 8th, 2008
 - Saturday classes – September 6th, October 18th, 2008
 - December - one week morning intensive 30 hour course.
 - Tuesday/Thursday classes – January 6th, February 17th, April 7th, May 19th, July 7th, September 8th, and October 20th, 2009.
 - Saturday classes – January 10th, 2009, February 21st, April 11th, May 23rd, July 11, September 12th and October 24th, 2009.

ASL Beginners: Prep 1, 1-4 units, 30 hours

ASL Beginners: Prep 2, 4-6 units, 30 hours

ASL Beginners: Prep 3, 7-10 units, 30 hours

ASL Beginners: Prep 4, 11-12 units, 30 hours

ASL – American Sign Language Tuition fees

Each 30 hour Course: \$195.

Registration: \$35

Final registration: 1 week prior to course start day. There is a \$20 late registration fee.

Text books: Students are required to have the following materials prior to class start date. Vista Signing Naturally Level 1, blue book, and can be bought at Douglas College and Vancouver Community College.

Books and tapes are non-returnable and non-refundable.



ASL Literature book/vhs tape/CD about \$40.00 plus GST